

# THE COVE

DUBAI CREEK HARBOUR

FLOOR PLANS

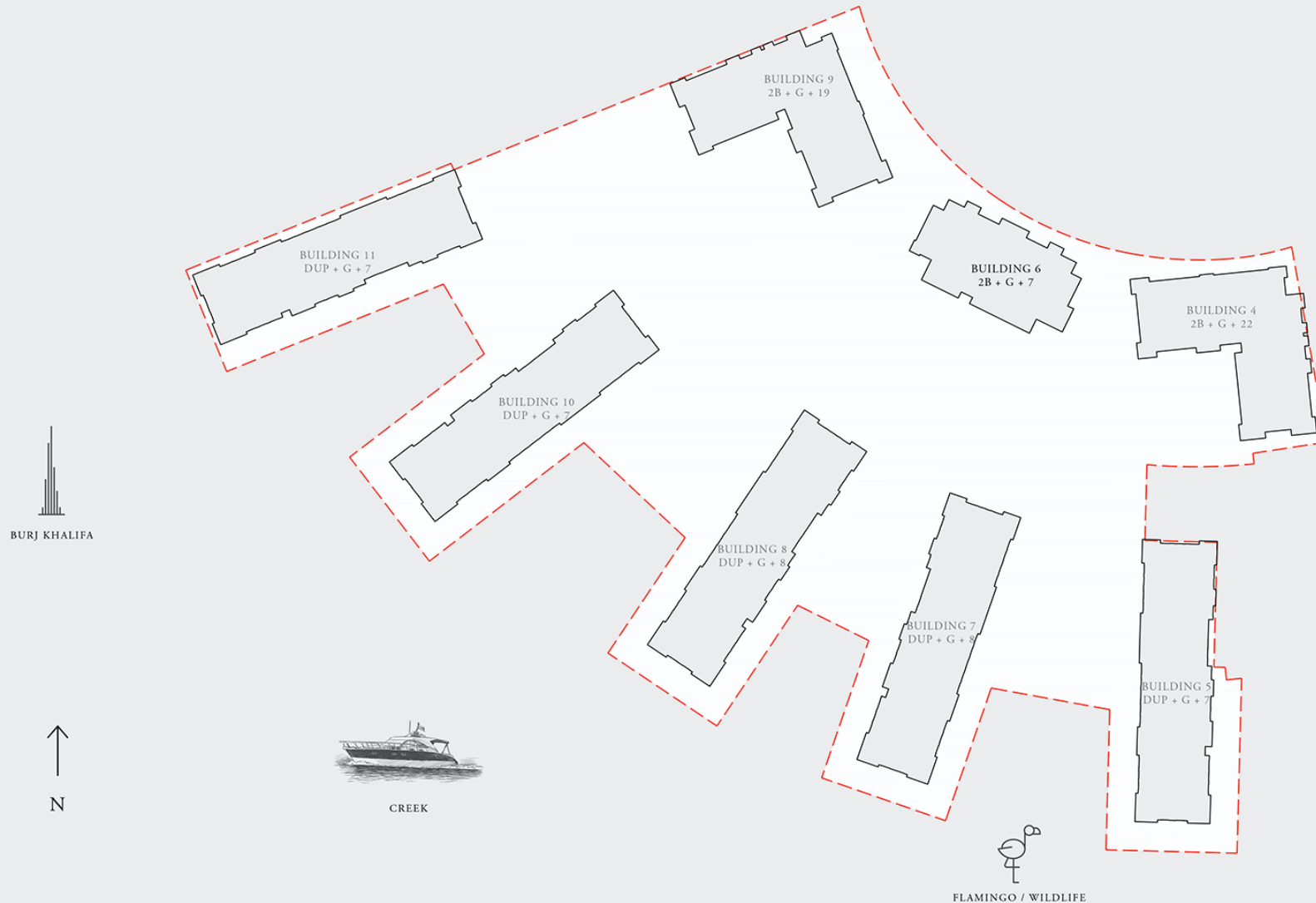
BUILDING 6

**FS**  
REAL ESTATE  
STAY AHEAD, INVEST SMART

**db**  
DUBRICKS  
POSSIBILITIES ARE LIMITLESS

# PROPERTY / CLUSTER NAME

## MASSING PLAN



FLOOR PLAN 1. All dimensions are in imperial and metric, and measured from finish to finish excluding construction tolerances. 2. All materials, dimensions, and drawings are approximate only. 3. Information is subject to change without notice, at developer's absolute discretion. 4. Actual area may vary from the stated area. 5. Drawings not to scale. 6. All images used are for illustrative purposes only and do not represent the actual size, features, specifications, fittings, and furnishings. 7. The developer reserves the right to make revisions / alterations, at it's absolute discretion, without any liability whatsoever.

# THE COVE

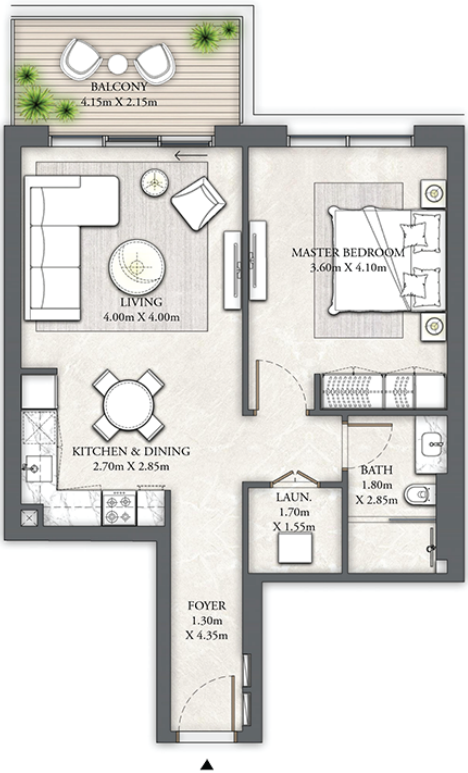
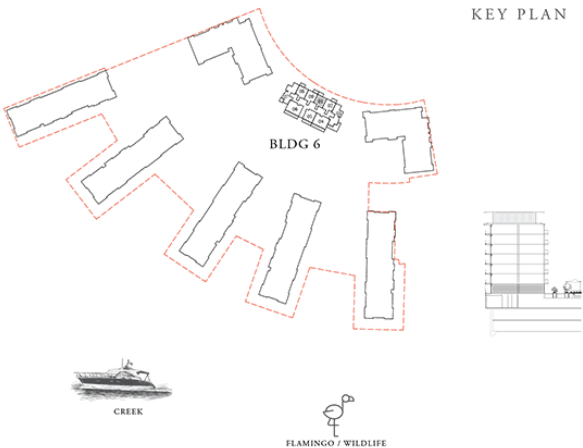
DUBAI CREEK HARBOUR

## BUILDING 6 1 BEDROOM

LEVEL 01      UNIT 01

SUITE AREA	706.33 SQ.FT.	65.62 SQ.M.
BALCONY AREA	97.84 SQ.FT.	9.09 SQ.M.
TOTAL AREA	804.17 SQ.FT.	74.71 SQ.M.

KEY PLAN



FLOOR PLAN 1. All dimensions are in imperial and metric, and measured from finish to finish excluding construction tolerances. 2. All materials, dimensions, and drawings are approximate only. 3. Information is subject to change without notice, at developer's absolute discretion. 4. Actual area may vary from the stated area. 5. Drawings not to scale. 6. All images used are for illustrative purposes only and do not represent the actual size, features, specifications, fittings, and furnishings. 7. The developer reserves the right to make revisions / alterations, at it's absolute discretion, without any liability whatsoever.

# THE COVE

DUBAI CREEK HARBOUR

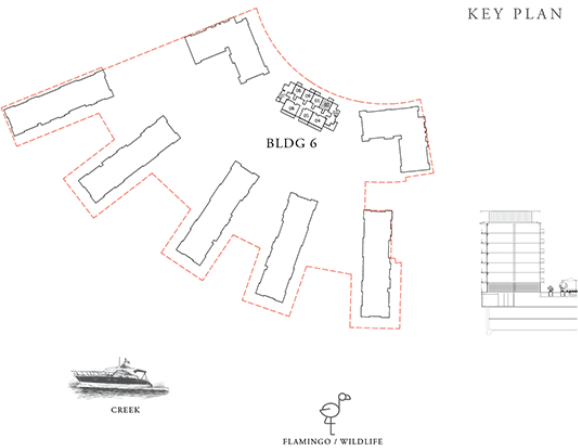
## BUILDING 6 1 BEDROOM

LEVEL 01      UNIT 02

SUITE AREA	706.65 SQ.FT.	65.65 SQ.M.
BALCONY AREA	93.65 SQ.FT.	8.70 SQ.M.
TOTAL AREA	800.30 SQ.FT.	74.35 SQ.M.



KEY PLAN



FLOOR PLAN 1. All dimensions are in imperial and metric, and measured from finish to finish excluding construction tolerances. 2. All materials, dimensions, and drawings are approximate only. 3. Information is subject to change without notice, at developer's absolute discretion. 4. Actual area may vary from the stated area. 5. Drawings not to scale. 6. All images used are for illustrative purposes only and do not represent the actual size, features, specifications, fittings, and furnishings. 7. The developer reserves the right to make revisions / alterations, at it's absolute discretion, without any liability whatsoever.



# THE COVE

DUBAI CREEK HARBOUR

## BUILDING 6 2 BEDROOM

LEVEL 01      UNIT 03

SUITE AREA	1072.62 SQ.FT.	99.65 SQ.M.
BALCONY AREA	358.55 SQ.FT.	33.31 SQ.M.
TOTAL AREA	1431.17 SQ.FT.	132.96 SQ.M.



BURJ KHALIFA



N

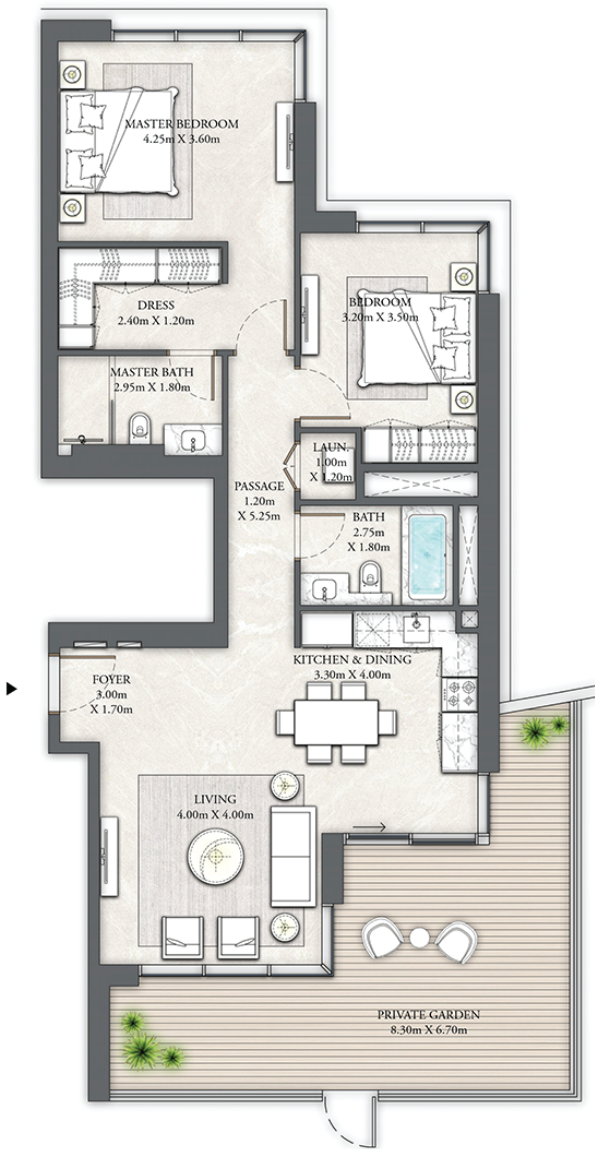
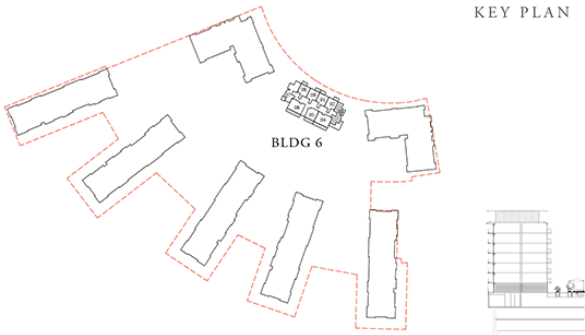


CREEK



FLAMINGO / WILDLIFE

KEY PLAN



FLOOR PLAN 1. All dimensions are in imperial and metric, and measured from finish to finish excluding construction tolerances. 2. All materials, dimensions, and drawings are approximate only. 3. Information is subject to change without notice, at developer's absolute discretion. 4. Actual area may vary from the stated area. 5. Drawings not to scale. 6. All images used are for illustrative purposes only and do not represent the actual size, features, specifications, fittings, and furnishings. 7. The developer reserves the right to make revisions / alterations, at it's absolute discretion, without any liability whatsoever.

# THE COVE

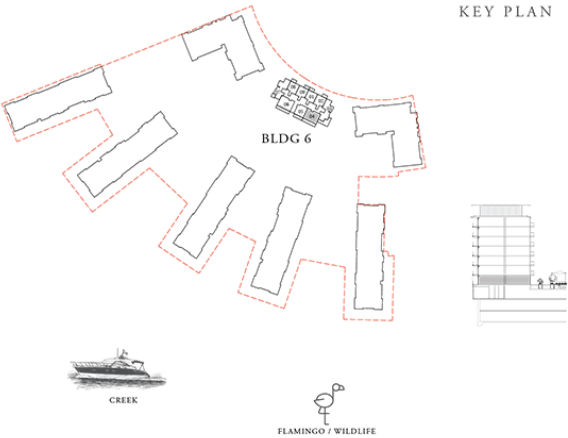
DUBAI CREEK HARBOUR

## BUILDING 6 2 BEDROOM

LEVEL 01

UNIT 04

SUITE AREA	1006.64 SQ.FT.	93.52 SQ.M.
BALCONY AREA	270.28 SQ.FT.	25.11 SQ.M.
TOTAL AREA	1276.92 SQ.FT.	118.63 SQ.M.



FLOOR PLAN 1. All dimensions are in imperial and metric, and measured from finish to finish excluding construction tolerances. 2. All materials, dimensions, and drawings are approximate only. 3. Information is subject to change without notice, at developer's absolute discretion. 4. Actual area may vary from the stated area. 5. Drawings not to scale. 6. All images used are for illustrative purposes only and do not represent the actual size, features, specifications, fittings, and furnishings. 7. The developer reserves the right to make revisions / alterations, at it's absolute discretion, without any liability whatsoever.

EMAAR

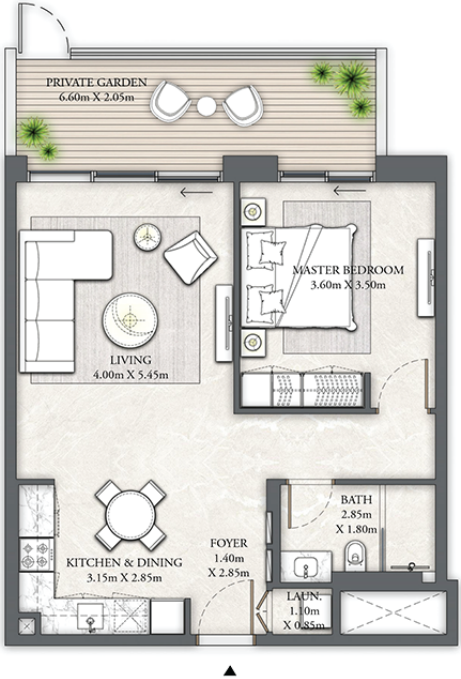
# THE COVE

DUBAI CREEK HARBOUR

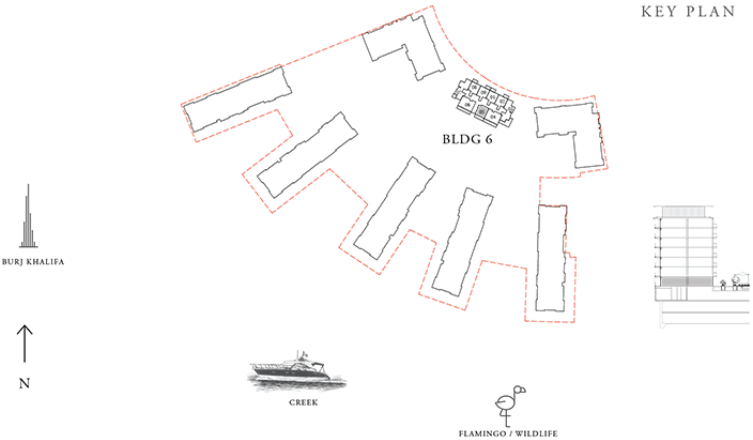
## BUILDING 6 1 BEDROOM

LEVEL 01      UNIT 05

SUITE AREA	700.62 SQ.FT.	65.09 SQ.M.
BALCONY AREA	163.50 SQ.FT.	15.19 SQ.M.
TOTAL AREA	864.12 SQ.FT.	80.28 SQ.M.



KEY PLAN



FLOOR PLAN 1. All dimensions are in imperial and metric, and measured from finish to finish excluding construction tolerances. 2. All materials, dimensions, and drawings are approximate only. 3. Information is subject to change without notice, at developer's absolute discretion. 4. Actual area may vary from the stated area. 5. Drawings not to scale. 6. All images used are for illustrative purposes only and do not represent the actual size, features, specifications, fittings, and furnishings. 7. The developer reserves the right to make revisions / alterations, at it's absolute discretion, without any liability whatsoever.

EMAAR

# THE COVE

DUBAI CREEK HARBOUR

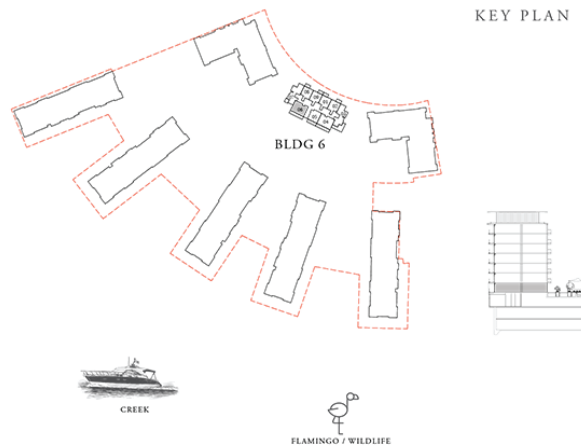
## BUILDING 6 2 BEDROOM

LEVEL 01

UNIT 06

SUITE AREA	1007.93 SQ.FT.	93.64 SQ.M.
BALCONY AREA	255.75 SQ.FT.	23.76 SQ.M.
TOTAL AREA	1263.68 SQ.FT.	117.40 SQ.M.

KEY PLAN



FLOOR PLAN 1. All dimensions are in imperial and metric, and measured from finish to finish excluding construction tolerances. 2. All materials, dimensions, and drawings are approximate only. 3. Information is subject to change without notice, at developer's absolute discretion. 4. Actual area may vary from the stated area. 5. Drawings not to scale. 6. All images used are for illustrative purposes only and do not represent the actual size, features, specifications, fittings, and furnishings. 7. The developer reserves the right to make revisions / alterations, at it's absolute discretion, without any liability whatsoever.

EMAAR

# THE COVE

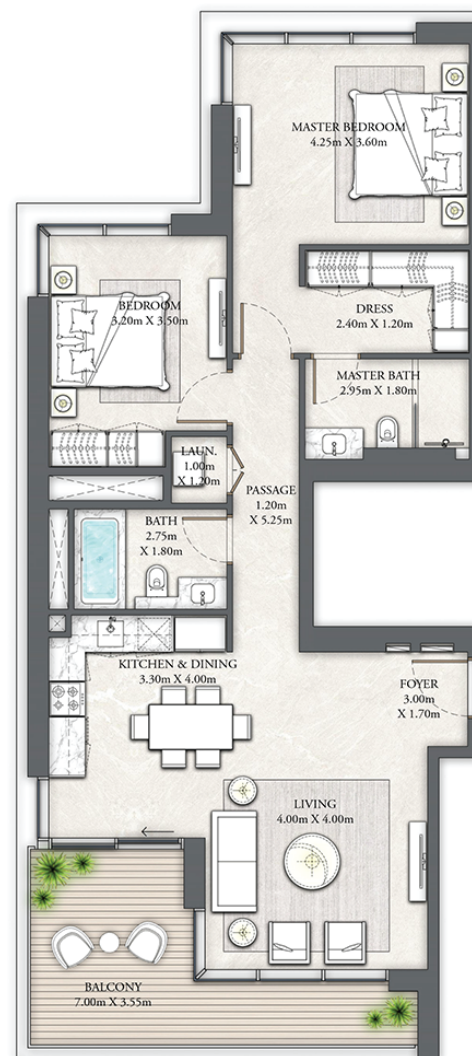
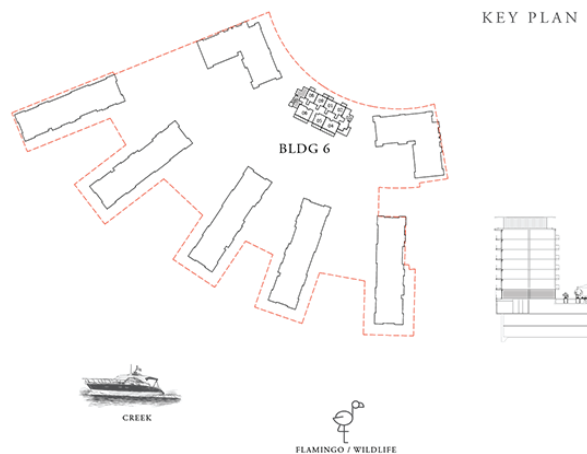
DUBAI CREEK HARBOUR

## BUILDING 6 2 BEDROOM

LEVEL 01

UNIT 07

SUITE AREA	1072.62 SQ.FT.	99.65 SQ.M.
BALCONY AREA	171.36 SQ.FT.	15.92 SQ.M.
TOTAL AREA	1243.98 SQ.FT.	115.57 SQ.M.



FLOOR PLAN 1. All dimensions are in imperial and metric, and measured from finish to finish excluding construction tolerances. 2. All materials, dimensions, and drawings are approximate only. 3. Information is subject to change without notice, at developer's absolute discretion. 4. Actual area may vary from the stated area. 5. Drawings not to scale. 6. All images used are for illustrative purposes only and do not represent the actual size, features, specifications, fittings, and furnishings. 7. The developer reserves the right to make revisions / alterations, at its absolute discretion, without any liability whatsoever.

EMAAR



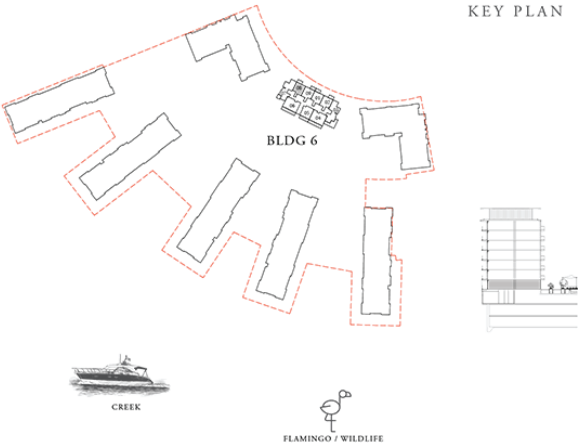
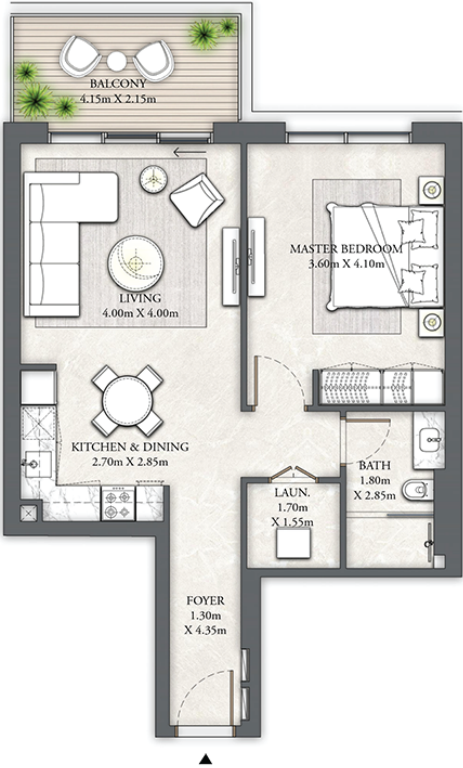
# THE COVE

DUBAI CREEK HARBOUR

## BUILDING 6 1 BEDROOM

LEVEL 01      UNIT 08

SUITE AREA	706.65 SQ.FT.	65.65 SQ.M.
BALCONY AREA	93.65 SQ.FT.	8.70 SQ.M.
TOTAL AREA	800.30 SQ.FT.	74.35 SQ.M.



FLOOR PLAN 1. All dimensions are in imperial and metric, and measured from finish to finish excluding construction tolerances. 2. All materials, dimensions, and drawings are approximate only. 3. Information is subject to change without notice, at developer's absolute discretion. 4. Actual area may vary from the stated area. 5. Drawings not to scale. 6. All images used are for illustrative purposes only and do not represent the actual size, features, specifications, fittings, and furnishings. 7. The developer reserves the right to make revisions / alterations, at it's absolute discretion, without any liability whatsoever.

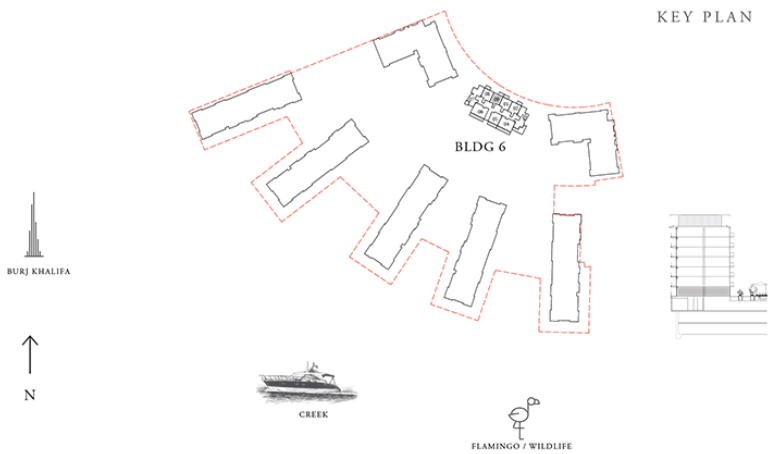
# THE COVE

DUBAI CREEK HARBOUR

## BUILDING 6 1 BEDROOM

LEVEL 01      UNIT 09

SUITE AREA	706.33 SQ.FT.	65.62 SQ.M.
BALCONY AREA	97.84 SQ.FT.	9.09 SQ.M.
TOTAL AREA	804.17 SQ.FT.	74.71 SQ.M.



FLOOR PLAN 1. All dimensions are in imperial and metric, and measured from finish to finish excluding construction tolerances. 2. All materials, dimensions, and drawings are approximate only. 3. Information is subject to change without notice, at developer's absolute discretion. 4. Actual area may vary from the stated area. 5. Drawings not to scale. 6. All images used are for illustrative purposes only and do not represent the actual size, features, specifications, fittings, and furnishings. 7. The developer reserves the right to make revisions / alterations, at it's absolute discretion, without any liability whatsoever.

# THE COVE

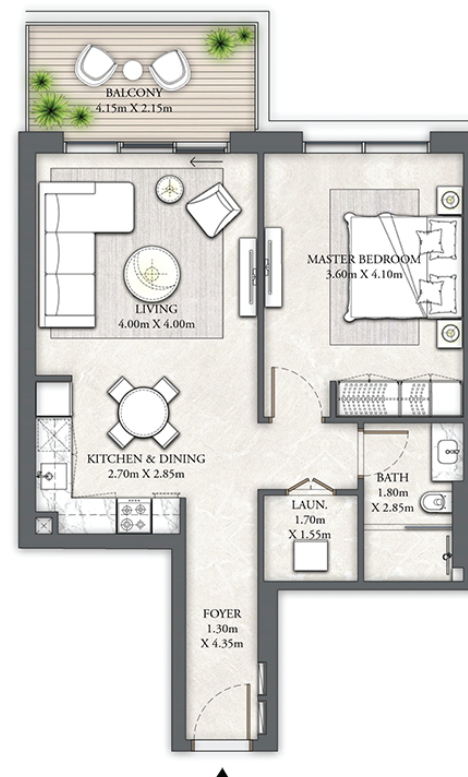
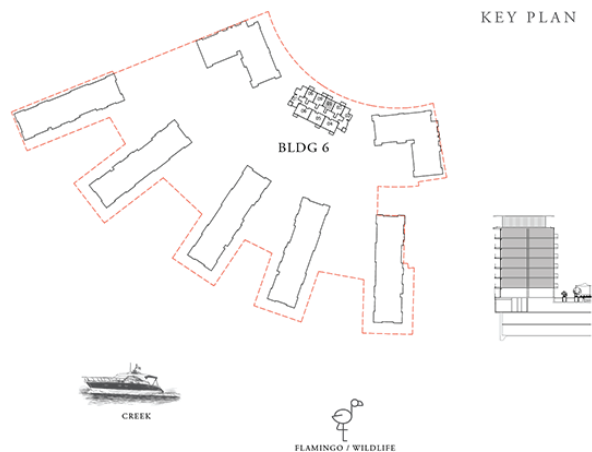
DUBAI CREEK HARBOUR

## BUILDING 6 1 BEDROOM

LEVELS 02 - 07

UNIT 01

SUITE AREA	706.33 SQ.FT.	65.62 SQ.M.
BALCONY AREA	97.84 SQ.FT.	9.09 SQ.M.
TOTAL AREA	804.17 SQ.FT.	74.71 SQ.M.



FLOOR PLAN 1. All dimensions are in imperial and metric, and measured from finish to finish excluding construction tolerances. 2. All materials, dimensions, and drawings are approximate only. 3. Information is subject to change without notice, at developer's absolute discretion. 4. Actual area may vary from the stated area. 5. Drawings not to scale. 6. All images used are for illustrative purposes only and do not represent the actual size, features, specifications, fittings, and furnishings. 7. The developer reserves the right to make revisions / alterations, at it's absolute discretion, without any liability whatsoever.

EMAAR

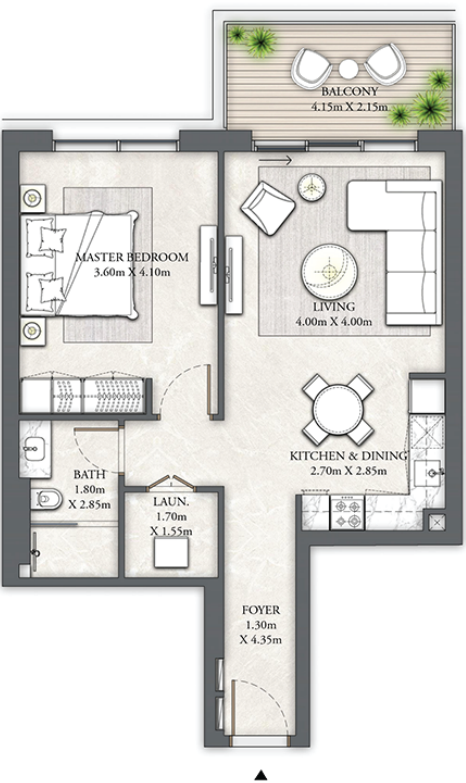
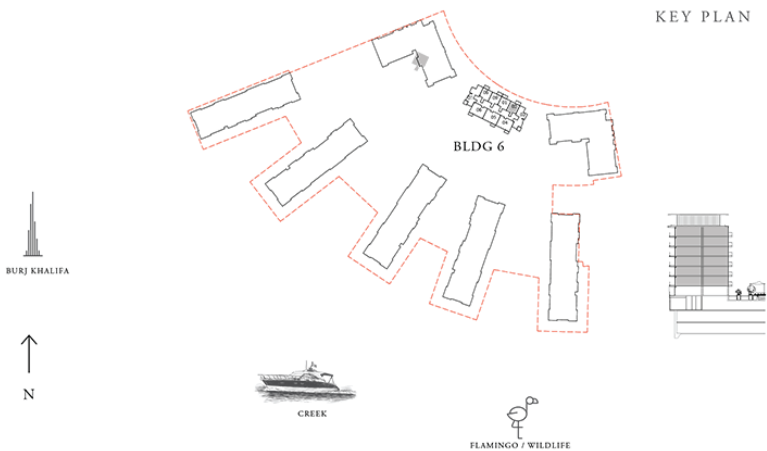
# THE COVE

DUBAI CREEK HARBOUR

## BUILDING 6 1 BEDROOM

LEVELS 02 - 07      UNIT 02

SUITE AREA	706.65 SQ.FT.	65.65 SQ.M.
BALCONY AREA	93.65 SQ.FT.	8.70 SQ.M.
TOTAL AREA	800.30 SQ.FT.	74.35 SQ.M.



FLOOR PLAN 1. All dimensions are in imperial and metric, and measured from finish to finish excluding construction tolerances. 2. All materials, dimensions, and drawings are approximate only. 3. Information is subject to change without notice, at developer's absolute discretion. 4. Actual area may vary from the stated area. 5. Drawings not to scale. 6. All images used are for illustrative purposes only and do not represent the actual size, features, specifications, fittings, and furnishings. 7. The developer reserves the right to make revisions / alterations, at it's absolute discretion, without any liability whatsoever.

# THE COVE

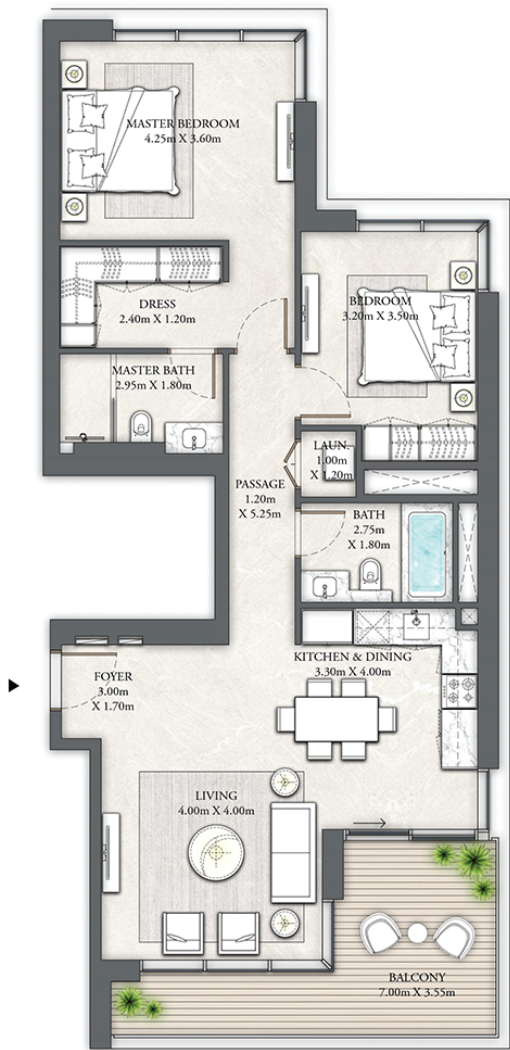
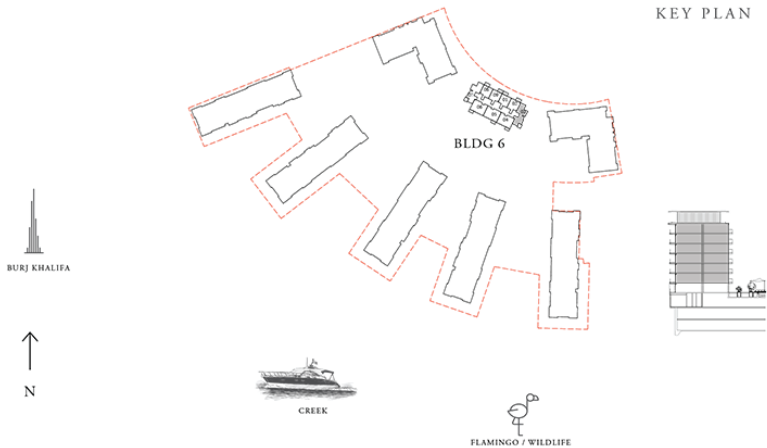
DUBAI CREEK HARBOUR

## BUILDING 6 2 BEDROOM

LEVELS 02 - 07      UNIT 03

SUITE AREA	1072.62 SQ.FT.	99.65 SQ.M.
BALCONY AREA	171.36 SQ.FT.	15.92 SQ.M.
TOTAL AREA	1243.98 SQ.FT.	115.57 SQ.M.

KEY PLAN



FLOOR PLAN 1. All dimensions are in imperial and metric, and measured from finish to finish excluding construction tolerances. 2. All materials, dimensions, and drawings are approximate only. 3. Information is subject to change without notice, at developer's absolute discretion. 4. Actual area may vary from the stated area. 5. Drawings not to scale. 6. All images used are for illustrative purposes only and do not represent the actual size, features, specifications, fittings, and furnishings. 7. The developer reserves the right to make revisions / alterations, at it's absolute discretion, without any liability whatsoever.



# THE COVE

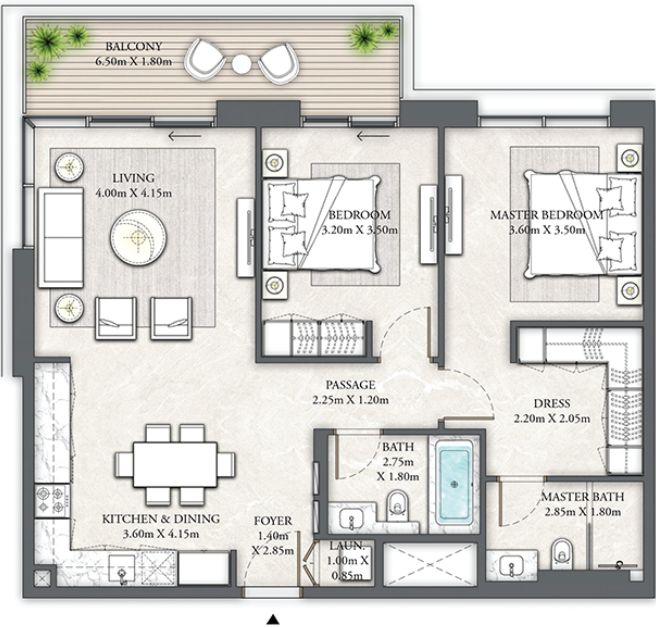
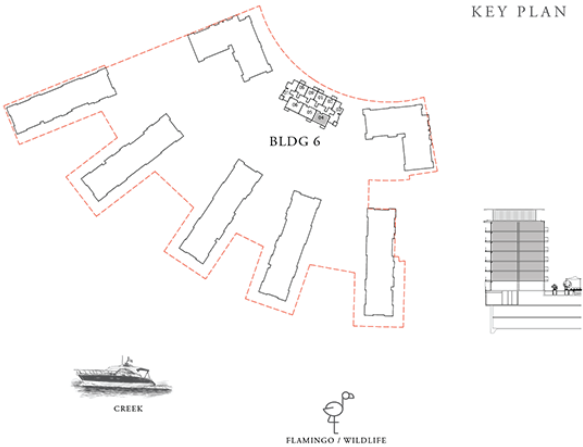
DUBAI CREEK HARBOUR

## BUILDING 6 2 BEDROOM

LEVELS 02 - 07      UNIT 04

SUITE AREA	1008.15 SQ.FT.	93.66 SQ.M.
BALCONY AREA	136.16 SQ.FT.	12.65 SQ.M.
TOTAL AREA	1144.31 SQ.FT.	106.31 SQ.M.

KEY PLAN



FLOOR PLAN 1. All dimensions are in imperial and metric, and measured from finish to finish excluding construction tolerances. 2. All materials, dimensions, and drawings are approximate only. 3. Information is subject to change without notice, at developer's absolute discretion. 4. Actual area may vary from the stated area. 5. Drawings not to scale. 6. All images used are for illustrative purposes only and do not represent the actual size, features, specifications, fittings, and furnishings. 7. The developer reserves the right to make revisions / alterations, at it's absolute discretion, without any liability whatsoever.

# THE COVE

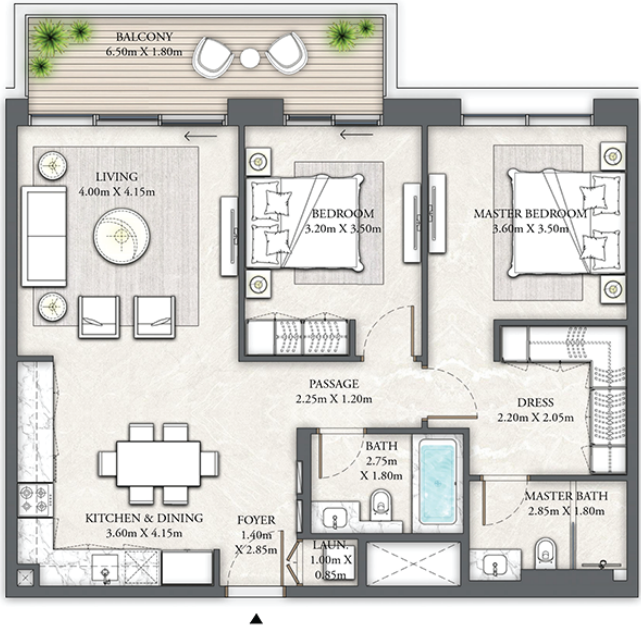
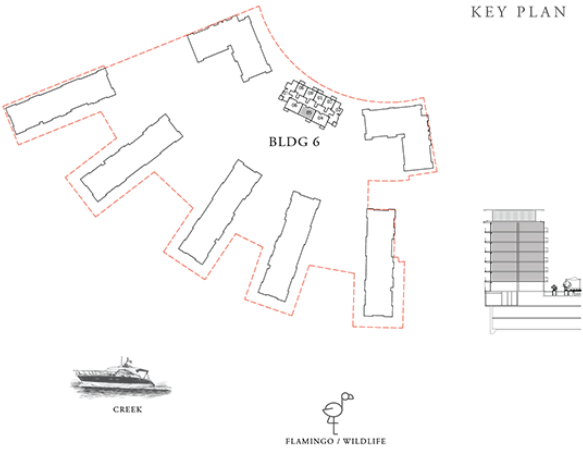
DUBAI CREEK HARBOUR

## BUILDING 6 2 BEDROOM

LEVELS 02 - 07      UNIT 05

SUITE AREA	1004.92 SQ.FT.	93.36 SQ.M.
BALCONY AREA	129.06 SQ.FT.	11.99 SQ.M.
TOTAL AREA	1133.98 SQ.FT.	105.35 SQ.M.

KEY PLAN



FLOOR PLAN 1. All dimensions are in imperial and metric, and measured from finish to finish excluding construction tolerances. 2. All materials, dimensions, and drawings are approximate only. 3. Information is subject to change without notice, at developer's absolute discretion. 4. Actual area may vary from the stated area. 5. Drawings not to scale. 6. All images used are for illustrative purposes only and do not represent the actual size, features, specifications, fittings, and furnishings. 7. The developer reserves the right to make revisions / alterations, at it's absolute discretion, without any liability whatsoever.

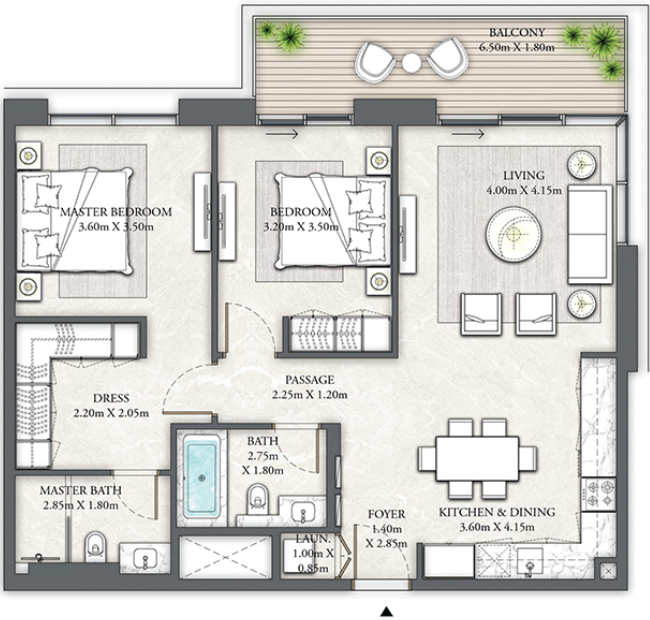
# THE COVE

DUBAI CREEK HARBOUR

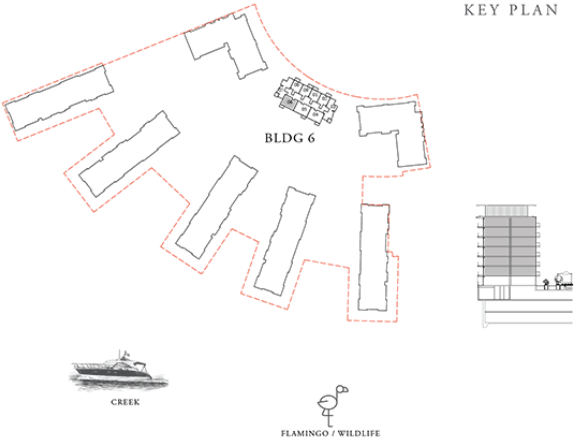
## BUILDING 6 2 BEDROOM

LEVELS 02 - 07      UNIT 06

SUITE AREA	1008.15 SQ.FT.	93.66 SQ.M.
BALCONY AREA	136.16 SQ.FT.	12.65 SQ.M.
TOTAL AREA	1144.31 SQ.FT.	106.31 SQ.M.



KEY PLAN



FLOOR PLAN 1. All dimensions are in imperial and metric, and measured from finish to finish excluding construction tolerances. 2. All materials, dimensions, and drawings are approximate only. 3. Information is subject to change without notice, at developer's absolute discretion. 4. Actual area may vary from the stated area. 5. Drawings not to scale. 6. All images used are for illustrative purposes only and do not represent the actual size, features, specifications, fittings, and furnishings. 7. The developer reserves the right to make revisions / alterations, at it's absolute discretion, without any liability whatsoever.

EMAAR

# THE COVE

DUBAI CREEK HARBOUR

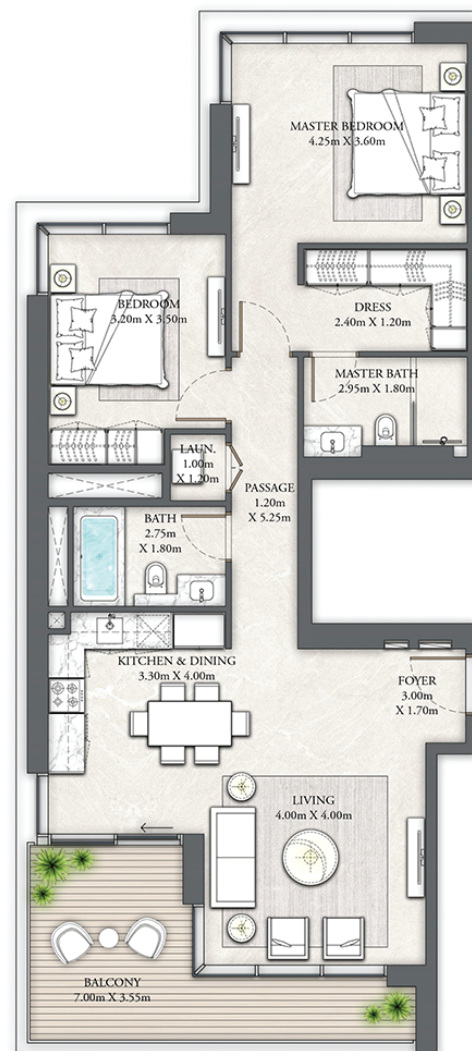
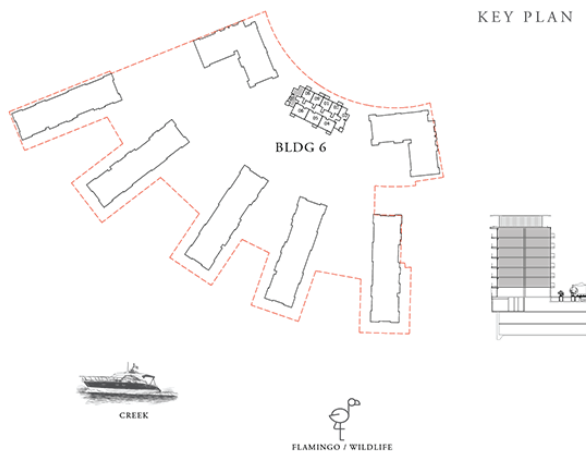
## BUILDING 6 2 BEDROOM

LEVELS 02 - 07

UNIT 07

SUITE AREA	1072.62 SQ.FT.	99.65 SQ.M.
BALCONY AREA	171.36 SQ.FT.	15.92 SQ.M.
TOTAL AREA	1243.98 SQ.FT.	115.57 SQ.M.

KEY PLAN



FLOOR PLAN 1. All dimensions are in imperial and metric, and measured from finish to finish excluding construction tolerances. 2. All materials, dimensions, and drawings are approximate only. 3. Information is subject to change without notice, at developer's absolute discretion. 4. Actual area may vary from the stated area. 5. Drawings not to scale. 6. All images used are for illustrative purposes only and do not represent the actual size, features, specifications, fittings, and furnishings. 7. The developer reserves the right to make revisions / alterations, at its absolute discretion, without any liability whatsoever.

EMAAR

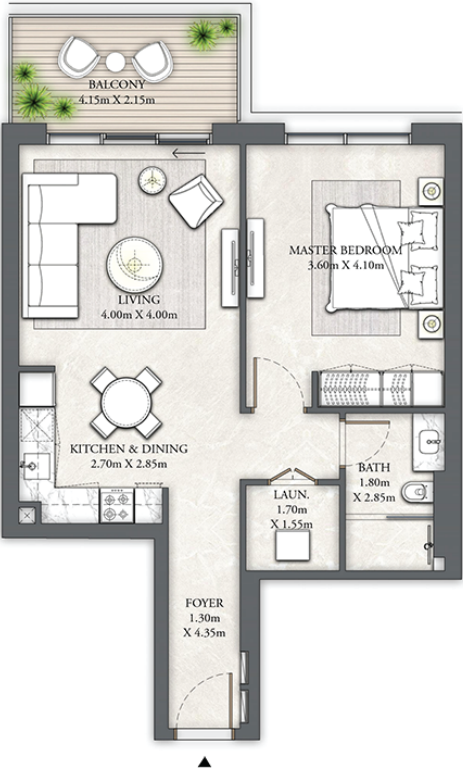
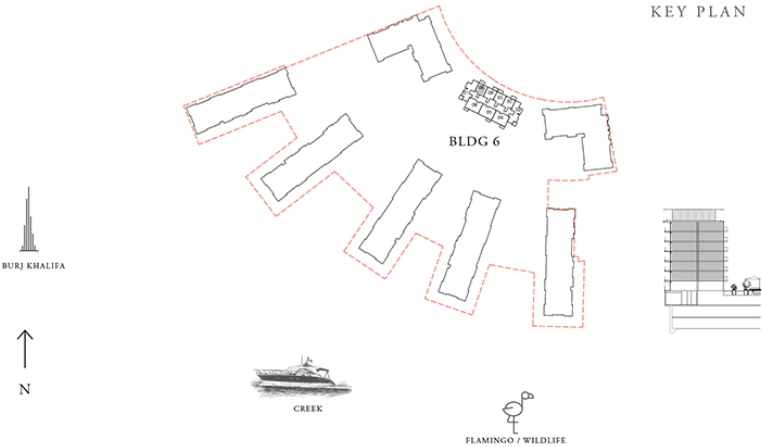
# THE COVE

DUBAI CREEK HARBOUR

## BUILDING 6 1 BEDROOM

LEVELS 02 - 07      UNIT 08

SUITE AREA	706.65 SQ.FT.	65.65 SQ.M.
BALCONY AREA	93.65 SQ.FT.	8.70 SQ.M.
TOTAL AREA	800.30 SQ.FT.	74.35 SQ.M.



FLOOR PLAN 1. All dimensions are in imperial and metric, and measured from finish to finish excluding construction tolerances. 2. All materials, dimensions, and drawings are approximate only. 3. Information is subject to change without notice, at developer's absolute discretion. 4. Actual area may vary from the stated area. 5. Drawings not to scale. 6. All images used are for illustrative purposes only and do not represent the actual size, features, specifications, fittings, and furnishings. 7. The developer reserves the right to make revisions / alterations, at it's absolute discretion, without any liability whatsoever.



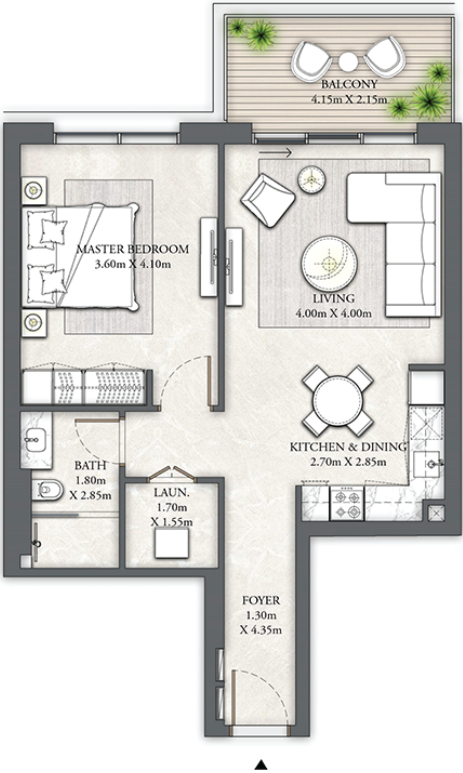
# THE COVE

DUBAI CREEK HARBOUR

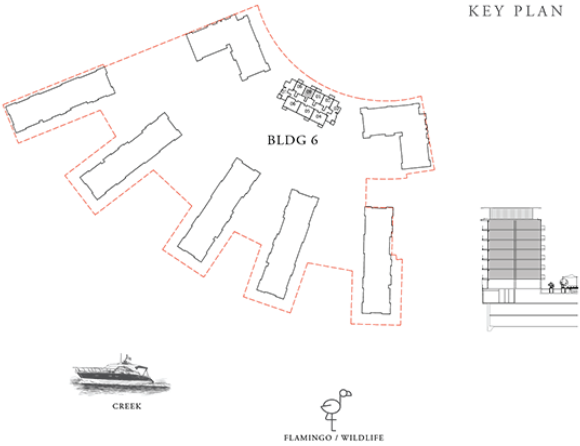
## BUILDING 6 1 BEDROOM

LEVELS 02 - 07      UNIT 09

SUITE AREA	706.33 SQ.FT.	65.62 SQ.M.
BALCONY AREA	97.84 SQ.FT.	9.09 SQ.M.
TOTAL AREA	804.17 SQ.FT.	74.71 SQ.M.



KEY PLAN



FLOOR PLAN 1. All dimensions are in imperial and metric, and measured from finish to finish excluding construction tolerances. 2. All materials, dimensions, and drawings are approximate only. 3. Information is subject to change without notice, at developer's absolute discretion. 4. Actual area may vary from the stated area. 5. Drawings not to scale. 6. All images used are for illustrative purposes only and do not represent the actual size, features, specifications, fittings, and furnishings. 7. The developer reserves the right to make revisions / alterations, at it's absolute discretion, without any liability whatsoever.

# THE COVE

DUBAI CREEK HARBOUR

FOR MORE INFORMATION PLEASE CONTACT



**REAL ESTATE**

STAY AHEAD, INVEST SMART

 +971 55 476 7630

 +971 4 368 7878

 [info@afsrealestate.com](mailto:info@afsrealestate.com)

 [www.afsrealestate.com](http://www.afsrealestate.com)



**DUBRICKS**

POSSIBILITIES ARE LIMITLESS

 +971 50 674 2020

 +971 4 368 7878

 [info@dubricks.com](mailto:info@dubricks.com)

 [www.dubricks.com](http://www.dubricks.com)

EMAAR